

The Role of Salt Action

What is it?

Salt Action is a strategy for joint action by the government and the community to manage and control salinity levels within the land and water resources of NSW. It is an important part of Total Catchment Management (TCM).

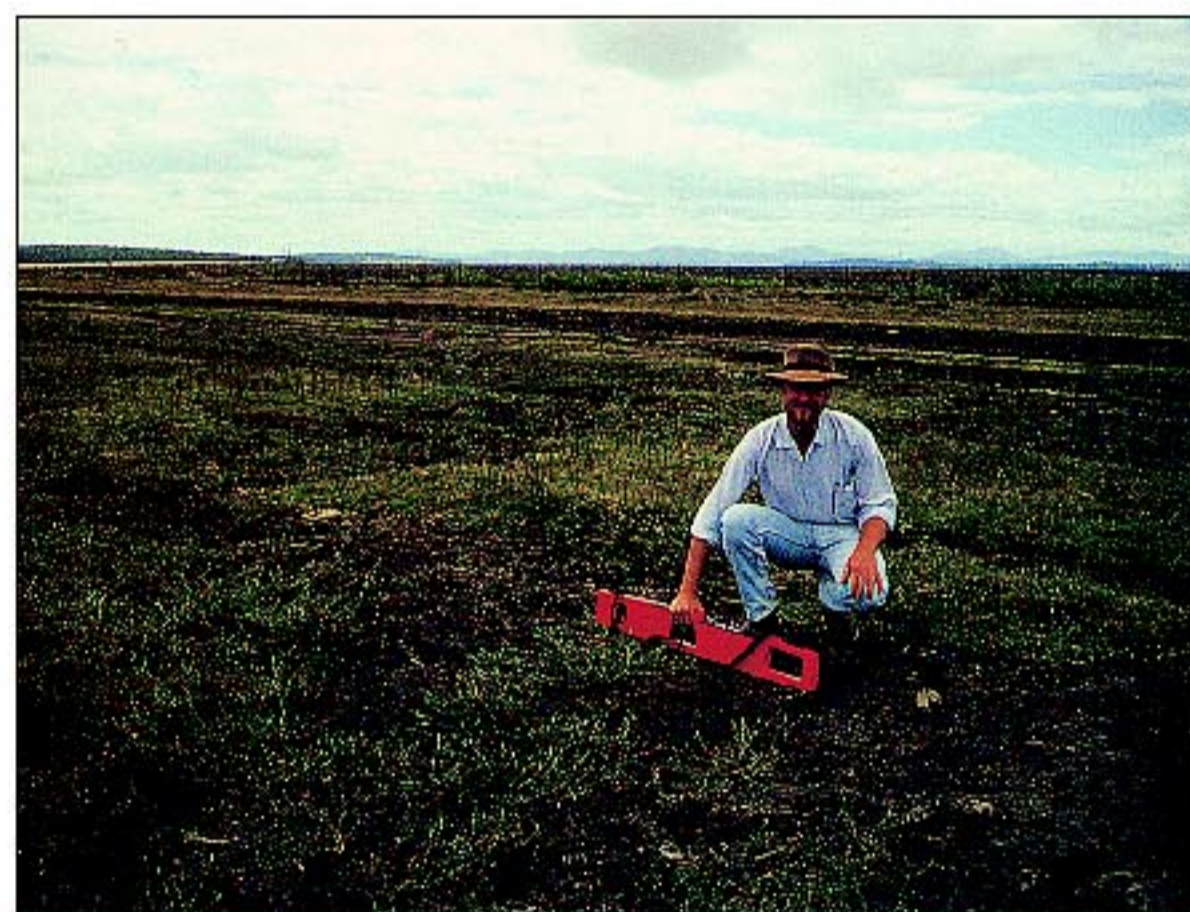
How can Salt Action help you?

Salt Action provides funds to assist with:

- salinity control projects by community groups.
- improved management practices on dryland and irrigation farms.
- monitoring salinity and watertable problems.

Salt Action staff can help you:

- assess the nature and extent of any salinity problems you may have.
- prepare farm and catchment plans.
- improve soil, crop and water management.
- put salinity and drainage works into place.



Salt Action staff can help you diagnose possible salinity problems.



Salt Action's community education program involves schools from all over NSW.